

World Class Contracting Safety Bulletin

December 2014

Field Projects

P1301 Hampton Inn Lloydminster - 122 Unit Hotel Finishing
P1315 Best Western Drayton Villy - 96 Unit Hotel Finishing RI
P1325 West Harvest Express Lloyd - 48 Unit Hotel Finishing
P1361 Olds Iron Works - Shop and Office—Finishing
P1362 Wyndham Gardens-154 Unit Hotel Underground Done
P1414 Hampton Inn Reno - Planning Stage
P1422 Lube City Drayton Valley - Planning Stage
P1429 Care Industries Shop - Groundwork Complete
P1432 Wingate YYC Hotel - Footings started
P1440 Cam Clark Ford Olds - Finishing Groundwork
P1458 Point West - 137 Unit Assisted Living—Planning Stage
P1459 Petro Canada Drayton Finishing Groundwork
P1470 Best Western Chestermere - Planning Stage
P1482 Red Deer Hospital Parkade - Planning Stage
P1483 Husky Energy - Finishing
P1488 Camex Equipment & Sales - Planning Stage
P1498 Gemini Lunch Room Reno - Planning Stage

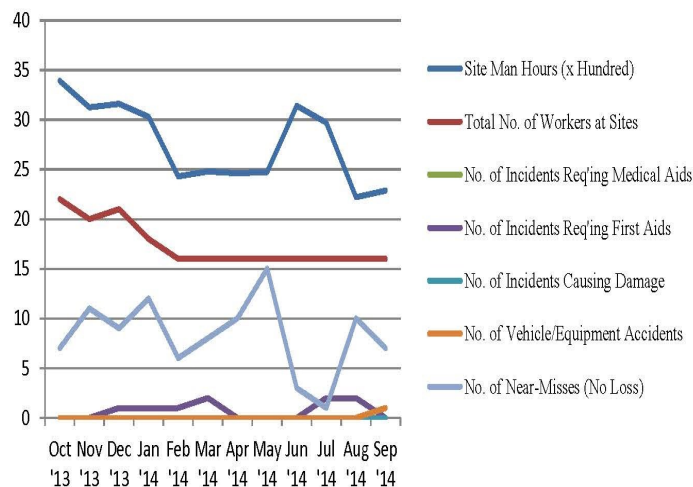
Employees

Kyle Kinley Welcome to the Team!

Quote of the Month

"The Mediocre Teacher Tells. The Good Teacher Explains. The Superior Teacher Demonstrates. The Great Teacher Inspires"
 - William Arthur Ward

Safety Stats 2014



What's Happening

December 19th WCC Ugly Sweater Christmas Party
Heritage Lanes ~ Cocktails @ 6pm, Dinner @ 6:30pm

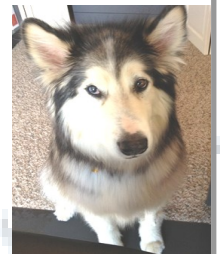
Christmas Shut Down
 December 24th Christmas Eve
 December 25th Christmas Day
 December 26th Boxing Day
 January 1st New Years Day
 January 2nd Friday Off

Note: the 29th, 30th & 31st will be regular work days

Congratulations Adam Slomp on your Scholarship Award
Adam & Tim will be returning from School December 22nd
Good Luck Ryan Burns in your semester of School

Mikka's Monthly Safety

Excavating and Trenching



Workers Guidelines & Responsibilities

- Read Safe job procedures
- Prior to commencement of any excavation ensure that all underground and/or overhead lines have been identified, exposed and well –marked or flagged
- Control traffic near roads or busy access ways
- Use traffic controllers/flaggers
- Set up barricades
- Provide ladders in immediate area for access/egress of trenches, excavations
- Where the cut back method is not possible, provide timber shoring, trench jacks, sheet piling, cage or other approved method
- Wear Visible Vest

When cutting back walls of an excavation you must know the soil classification

- 1. Likely to Crack or Crumble**
 - a. It has been excavated before
 - b. Stiff in consistency & compacted
 - c. Exhibits signs of surface cracking
- 2. Soft, Sandy or Loose**
 - a. Firm to very soft in consistency
 - b. Easy to excavate
 - c. Solid in appearance but flows or becomes unstable when disturbed
- 3. Hard and Compact**
 - a. Can only be penetrated with difficulty
 - b. Is very dense
 - c. Dry with no sign of water seepage